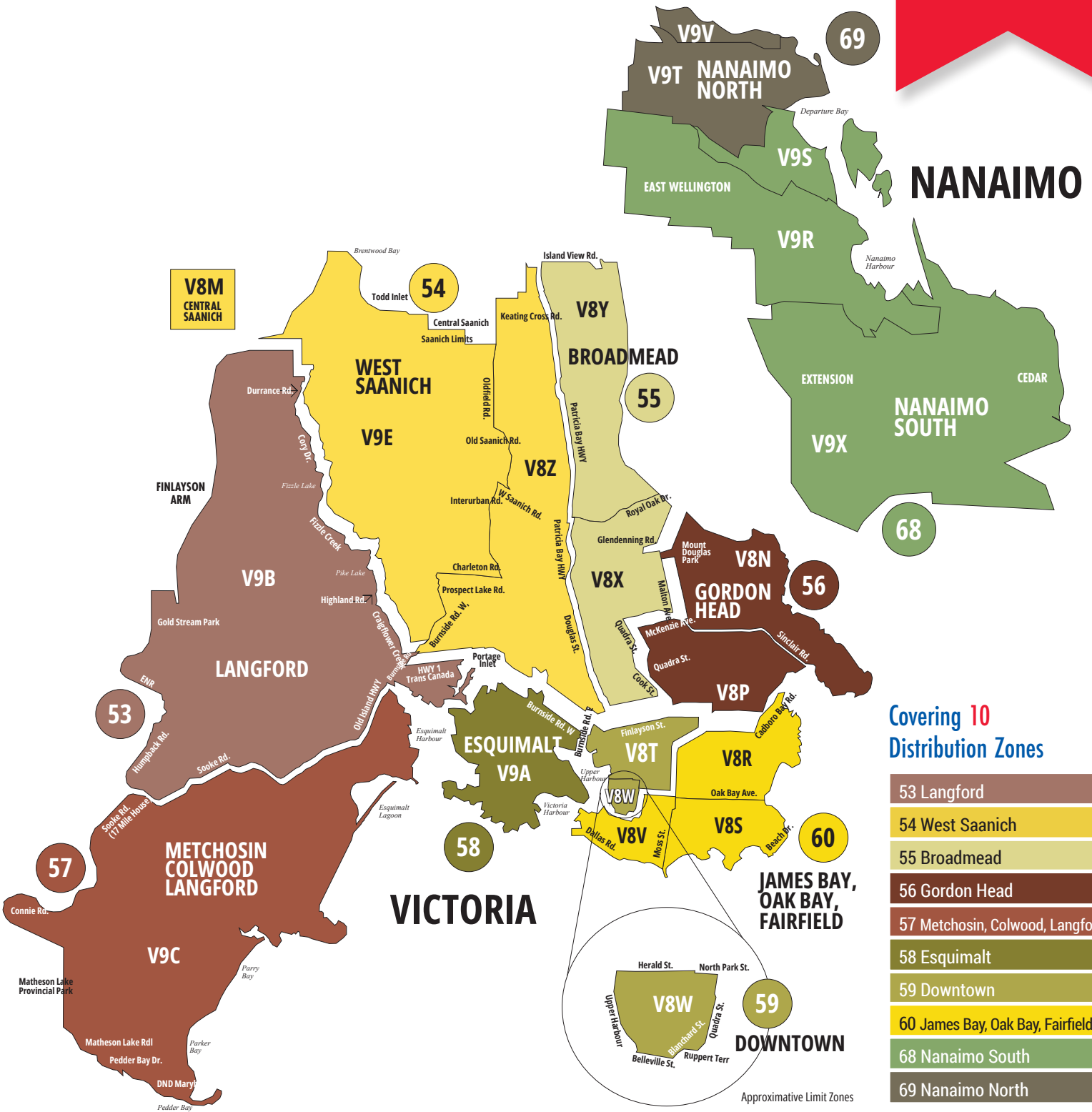


# Money \$aver®

VICTORIA | BRITISH COLUMBIA  
2024

125K

HOMES  
PER ISSUE



Covering 10  
Distribution Zones

- 53 Langford
- 54 West Saanich
- 55 Broadmead
- 56 Gordon Head
- 57 Metchosin, Colwood, Langford
- 58 Esquimalt
- 59 Downtown
- 60 James Bay, Oak Bay, Fairfield
- 68 Nanaimo South
- 69 Nanaimo North

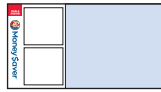


TO ADVERTISE:  
(250) 634-4501 | DRMG.com

# VICTORIA BRITISH COLUMBIA 2024

## Publication Specs

### Cover Options



**FRONT COVER**

6.5" x 5.875"



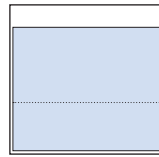
**DOUBLE FEATURE PANEL**

2.7" x 5.375"



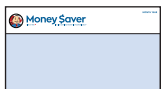
**SINGLE FEATURE PANEL**

2.7" x 2.6"



**INSIDE FULL BACK COVER**

10.25" w x 9.6" h



**BACK COVER**

10.75" x 4"



**FLAP**

6.25" w x 1.9" h



### No Fold Insert Options



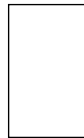
**MINI INSERT**

3.35" x 8.25"



**STANDARD INSERT**

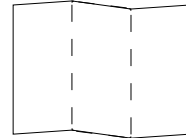
5.25" x 8.25"



**DELUXE POSTCARD**

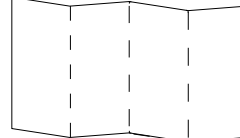
5.125" w x 9" h

### Folded Insert Options



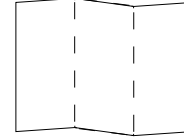
**FLYER 3-PANEL**

10.5" x 8.25"  
Folds: 5.5625" x 8.25"



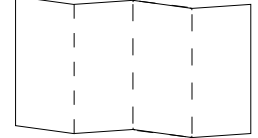
**LARGE MENU 4-PANEL**

21.5" x 8.25"  
Folds: 5.375" x 8.25"



**MENU 3-PANEL**

16" x 8.25"  
Folds: 5.33" x 8.25"



**MENU 4-PANEL**

16" x 8.25"  
Folds to: 3.5" x 8.25"

- Reaching 125,000 homes
- Covering 10 distribution zones
- Issued 12x a year



## Distribution

Zone Description	Circulation	FSA's
53 Langford	12,500 homes	V9B
54 West Saanich	12,500 homes	V8M, V8Z, V9E
55 Broadmead	12,500 homes	V8X, V8Y
56 Gordon Head	12,500 homes	V8N, V8P
57 Metchosin, Colwood, Langford	12,500 homes	V9B, V9C
58 Esquimalt	12,500 homes	V9A
59 Downtown	12,500 homes	V8T, V8W
60 James Bay, Oak Bay, Fairfield	12,500 homes	V8R, V8S, V8V
68 Nanaimo South	12,500 homes	V9R, V9S, V9X
69 Nanaimo North	12,500 homes	V9T, V9V

ISSUE	IN-HOME BETWEEN
1 JAN	Jan 17 - Jan 26
2 FEB	Feb 21 - Mar 1
3 MAR	Mar 20 - Mar 29
4 APR	Apr 24 - May 3
5 MAY	May 22 - May 31
6 JUN	Jun 19 - Jun 28
7 JUL	Jul 17 - Jul 26
8 AUG	Aug 21 - Aug 30
9 SEP	Sep 18 - Sep 27
10 OCT	Oct 16 - Oct 25
11 NOV	Nov 20 - Nov 29
12 DEC*	Dec 11 - Dec 18

December distribution includes zones 53, 57, 58 & 60

Please note: Given the uncertainty of supply chain issues, delays in service may occur. Additional fees applicable for premium stock upgrade.

(250) 634-4501 | DRMG.com