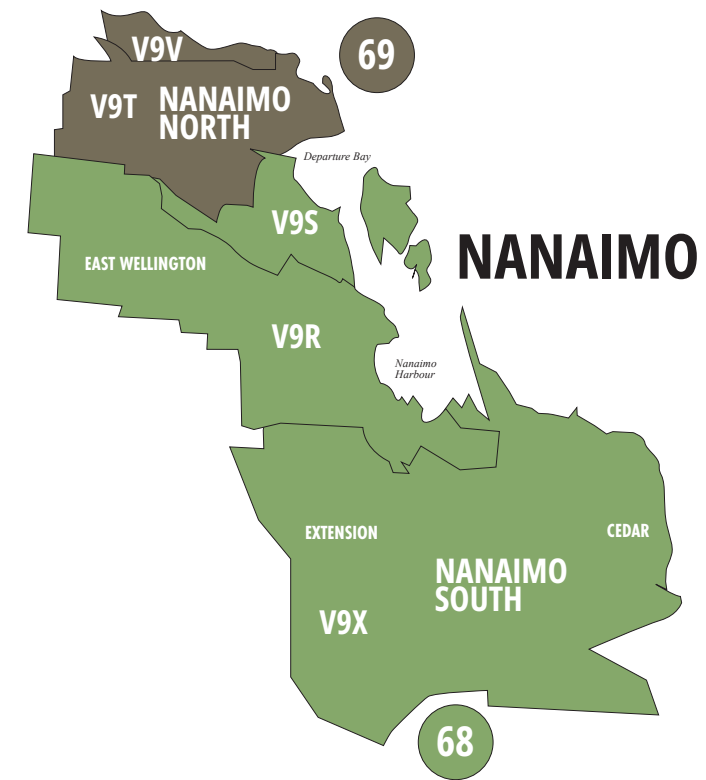


**Money Saver Envelope
Victoria Distribution**

- Reaching 125,000 homes
- Covering 10 distribution zones
- Issued 12x a year

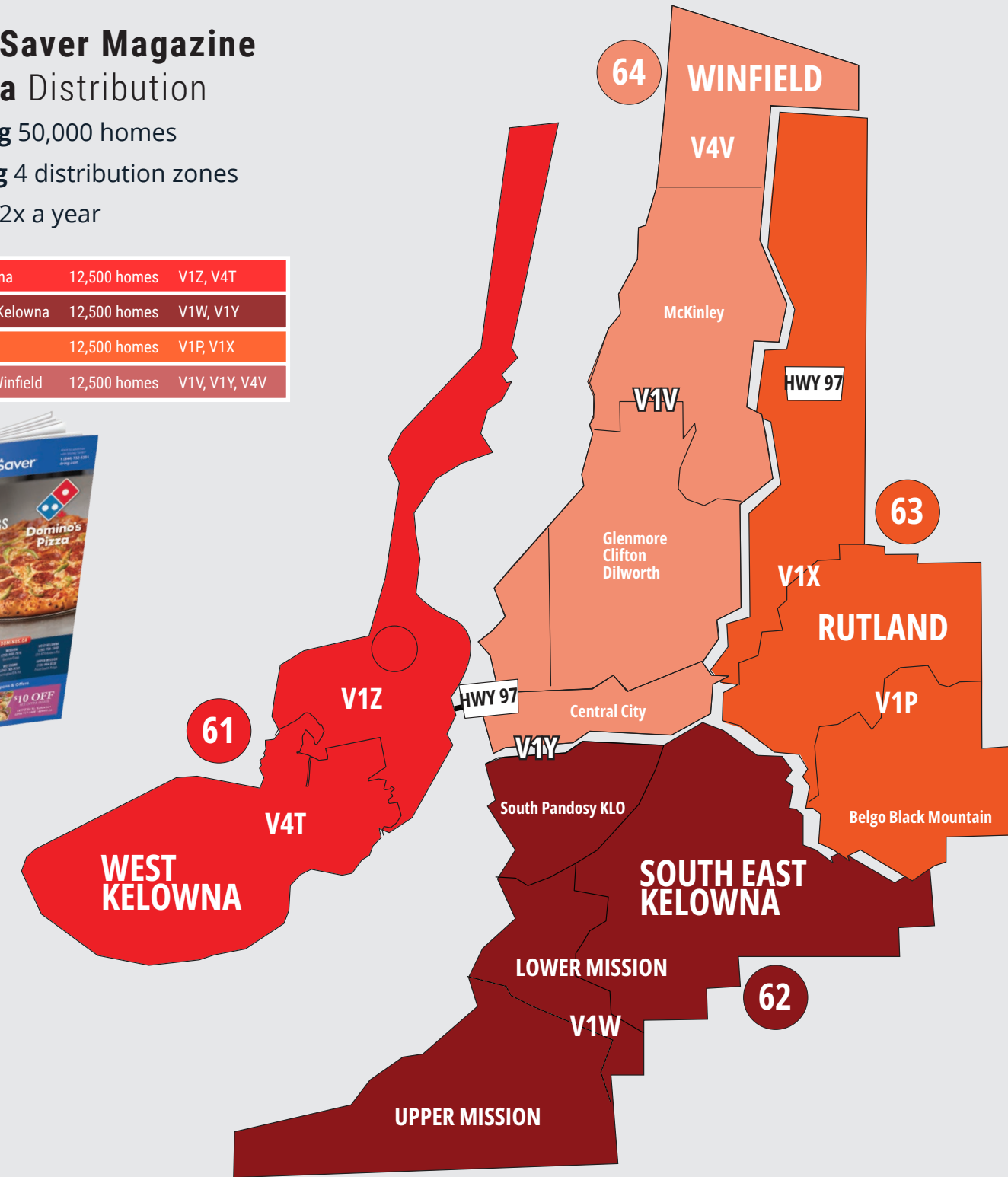
| | | |
|----------------------------------|--------------|---------------|
| 53 Langford | 12,500 homes | V9B |
| 54 West Saanich | 12,500 homes | V8M, V8Z, V9E |
| 55 Broadmead | 12,500 homes | V8X, V8Y |
| 56 Gordon Head | 12,500 homes | V8N, V8P |
| 57 Metchosin, Colwood, Langford | 12,500 homes | V9B, V9C |
| 58 Esquimalt | 12,500 homes | V9A |
| 59 Downtown | 12,500 homes | V8T, V8W |
| 60 James Bay, Oak Bay, Fairfield | 12,500 homes | V8R, V8S, V8V |
| 68 Nanaimo South | 12,500 homes | V9R, V9S, V9X |
| 69 Nanaimo North | 12,500 homes | V9T, V9V |



**Money Saver Magazine
Kelowna Distribution**

- Reaching 50,000 homes
- Covering 4 distribution zones
- Issued 12x a year

| | | |
|-----------------------|--------------|---------------|
| 61 West Kelowna | 12,500 homes | V1Z, V4T |
| 62 South East Kelowna | 12,500 homes | V1W, V1Y |
| 63 Rutland | 12,500 homes | V1P, V1X |
| 64 Glenmore, Winfield | 12,500 homes | V1V, V1Y, V4V |



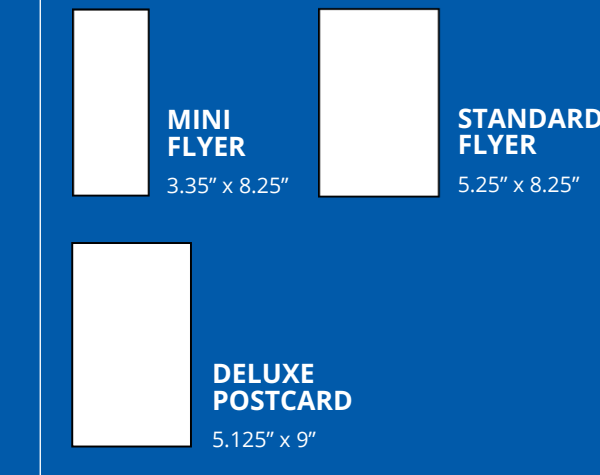
Kelowna Mailing Schedule

| ISSUE | IN-HOME | BETWEEN | ISSUE | IN-HOME | BETWEEN |
|-------|---------|-----------------|-------|---------|-----------------|
| 1 | JAN | Jan 17 - Jan 24 | 7 | JUL | Jul 17 - Jul 24 |
| 2 | FEB | Feb 14 - Feb 21 | 8 | AUG | Aug 21 - Aug 28 |
| 3 | MAR | Mar 13 - Mar 20 | 9 | SEP | Sep 25 - Oct 2 |
| 4 | APR | Apr 10 - Apr 17 | 10 | OCT | Oct 30 - Nov 6 |
| 5 | MAY | May 8 - May 15 | 11 | NOV | Nov 20 - Nov 27 |
| 6 | JUN | Jun 12 - Jun 19 | 12 | DEC* | Dec 11 - Dec 18 |

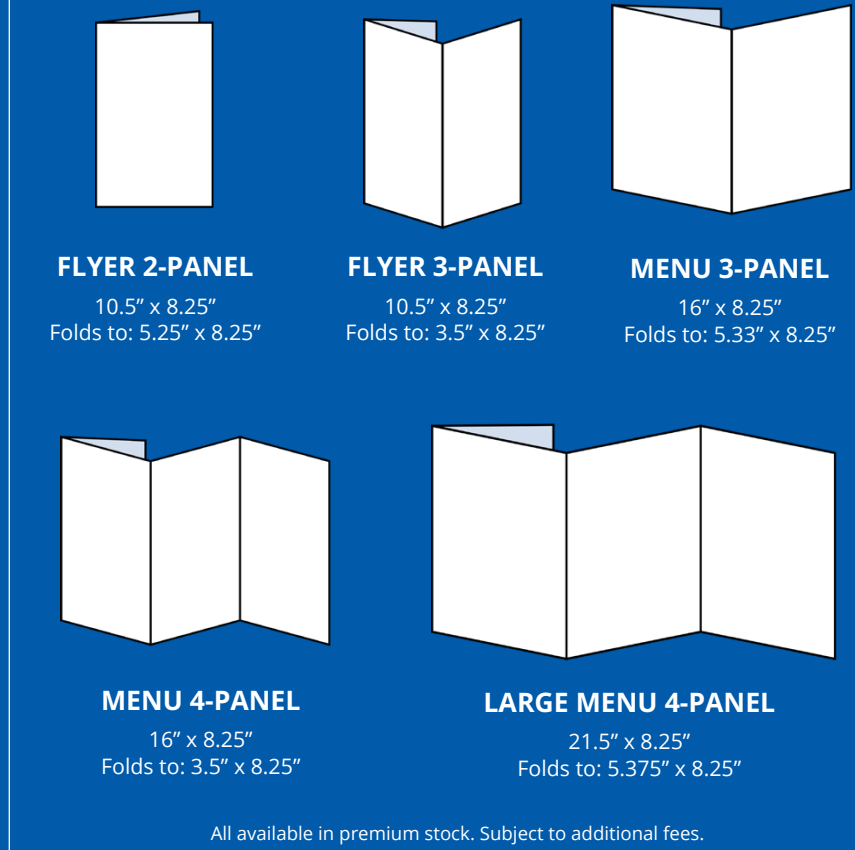


Money Saver Envelope Artwork Specifications

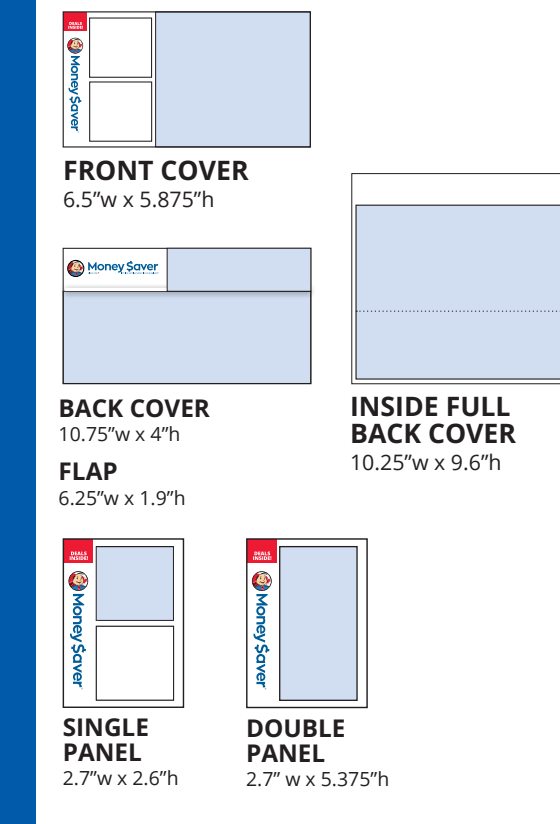
NO FOLD Insert Options



FOLDED Insert Options



COVER Options



DRMG 1.866.993.0600 | DRMG.com



Money \$aver
BRITISH COLUMBIA | DISTRIBUTION 2024

REACHING
700K
HOMES
PER ISSUE



VANCOUVER
VICTORIA
NANAIMO
KELOWNA



TO ADVERTISE:
1.866.993.0600 | DRMG.com

88%
of Canadians
visit a store or
go online after
receiving a direct
mail piece*

*Canada Post, Kantar, SMM Stats update 2019

92%
of Canadians
READ
Direct Mail*

71%
of Canadians
SHARE
Direct Mail*

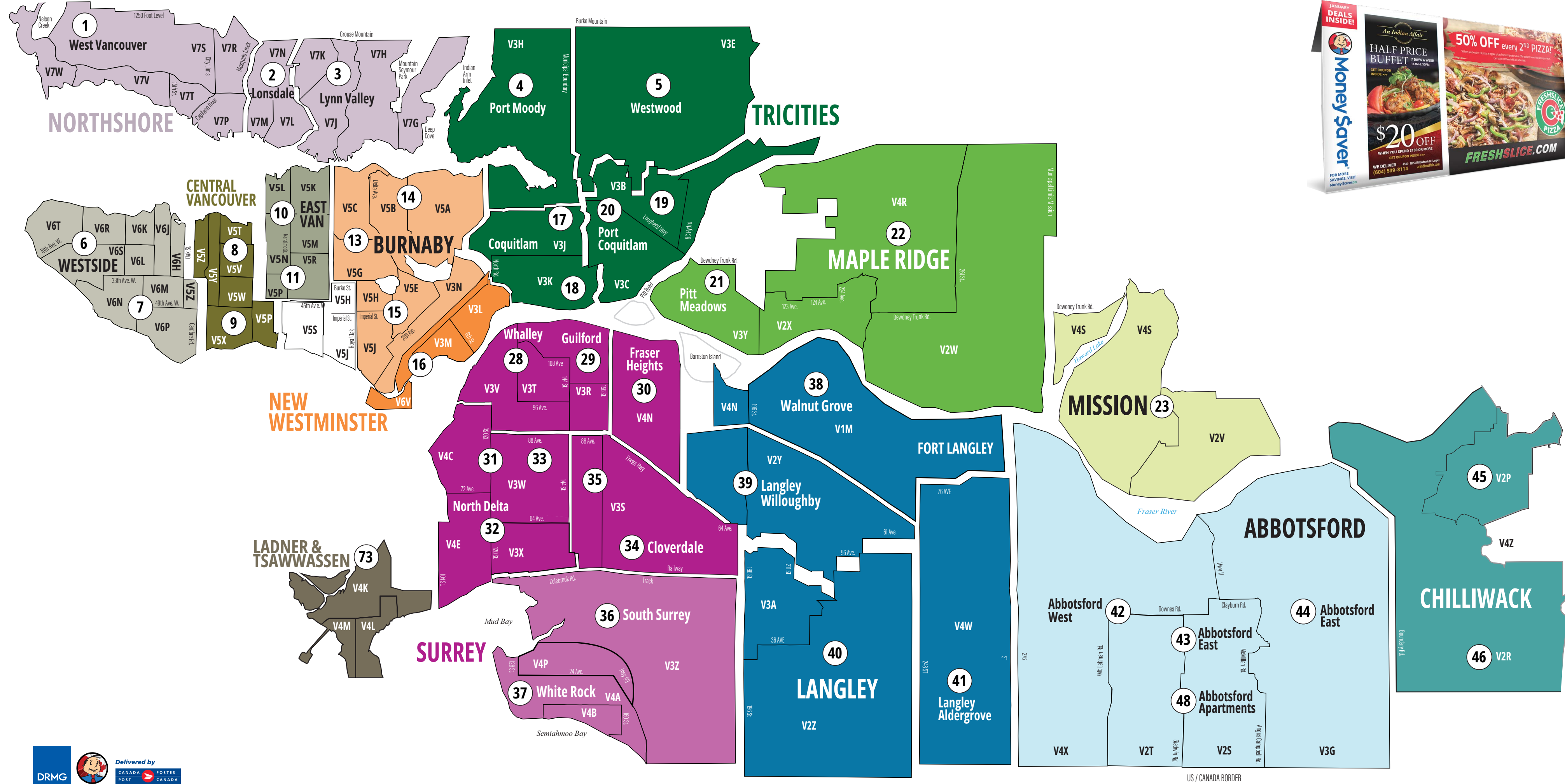
66%
of Canadians
KEEP
mail they find
useful*

*2018 Deal Nerd Coupon Study.
Canada Post, Kantar, SMM Status update 2019.

Money Saver Envelope Vancouver Distribution Zones

| | | | |
|----|-----------------------------|--------------|-----------------------------------|
| 1 | West Vancouver | 12,500 homes | V7P, V7R, V7S, V7T, V7V, V7W |
| 2 | Lonsdale | 12,500 homes | V7L, V7M, V7N |
| 3 | Deep Cove / Lynn Valley | 12,500 homes | V7G, V7H, V7J, V7K |
| 4 | Port Moody | 12,500 homes | V3H, V3J |
| 5 | Westwood / Burke Mountain | 12,500 homes | V3B, V3E |
| 17 | Coquitlam | 12,500 homes | V3J |
| 18 | Coquitlam | 12,500 homes | V3J, V3K, V3N |
| 19 | Port Coquitlam | 12,500 homes | V3B |
| 20 | Port Coquitlam | 12,500 homes | V3C |
| 6 | Kits / Shaughnessy | 12,500 homes | V6H, V6J, V6K, V6L, V6R, V6S, V6T |
| 7 | Marpole / Kerrisdale | 12,500 homes | V5Z, V6M, V6N, V6P |
| 8 | Main St. / Fraser St. | 12,500 homes | V5T, V5V, V5Y, V5Z |
| 9 | Marine Dr., Knight Street | 12,500 homes | V5P, V5W, V5X, V5Y |
| 10 | Commercial, Hastings | 12,500 homes | V5K, V5L, V5M, V5N |
| 11 | Kingsway / Victoria Ave. | 12,500 homes | V5M, V5P, V5R |
| 13 | Burnaby Heights, Willingdon | 12,500 homes | V5C, V5G |
| 14 | Burnaby SFU, Capital Hill | 12,500 homes | V5A, V5B |
| 15 | Burnaby Edmonds, Deer Park | 12,500 homes | V3N, V5E, V5H, V5J |
| 16 | New West Houses | 12,500 homes | V3L, V3M, V3N, V6V |
| 21 | Pitt Meadows, Maple Ridge | 12,500 homes | V2X, V3Y |
| 22 | Maple Ridge | 12,500 homes | V2W, V2X, V4R |
| 23 | Mission | 12,500 homes | V2V, V4S |
| 28 | Surrey Central, Whalley | 12,500 homes | V3T, V3V |
| 29 | Guilford | 12,500 homes | V3R |
| 30 | Fraser Heights | 12,500 homes | V4N |
| 31 | North Delta | 12,500 homes | V3W, V4C |
| 32 | North Delta | 12,500 homes | V3W, V3X, V4E |
| 33 | Surrey | 12,500 homes | V3W |
| 34 | Cloverdale | 12,500 homes | V3S |
| 35 | Surrey | 12,500 homes | V3S |
| 36 | South Surrey / Morgan Creek | 12,500 homes | V3Z, V4P |
| 37 | White Rock | 12,500 homes | V4A, V4B |
| 38 | Walnut Grove / Fort Langley | 12,500 homes | V1M, V4N |
| 39 | Langley Willoughby | 12,500 homes | V2Y, V4N |
| 40 | Langley City / Brookwood | 12,500 homes | V2Z, V3A |
| 41 | Langley, Aldergrove | 6,250 homes | V4W |
| 42 | Abbotsford West | 12,500 homes | V2S, V2T, V3G, V4X |
| 43 | Abbotsford East | 12,500 homes | V2S, V2T |
| 44 | Abbotsford East | 6,250 homes | V3G |
| 48 | Abbotsford Apartments | 12,500 homes | V2S, V2T |
| 45 | Chilliwack | 12,500 homes | V2P |
| 46 | Chilliwack | 12,500 homes | V2R |

Boundaries are approximate.



VANCOUVER DISTRIBUTION

- Reaching 525,000 homes
- Covering 43 distribution zones
- Issued 12x a year

Vancouver & Victoria Mailing Schedule

| ISSUE | IN-HOMEBETWEEN |
|-------|----------------------|
| 1 | JAN Jan 17 - Jan 26 |
| 2 | FEB Feb 21 - Mar 1 |
| 3 | MAR Mar 20 - Mar 29 |
| 4 | APR Apr 24 - May 3 |
| 5 | MAY May 22 - May 31 |
| 6 | JUN Jun 19 - Jun 28 |
| 7 | JUL Jul 17 - Jul 26 |
| 8 | AUG Aug 21 - Aug 30 |
| 9 | SEP Sep 18 - Sep 27 |
| 10 | OCT Oct 16 - Oct 25 |
| 11 | NOV Nov 20 - Nov 29 |
| 12 | DEC* Dec 11 - Dec 20 |

DECEMBER DISTRIBUTION INCLUDES:
Vancouver Zones: 21, 22, 23, 28, 29, 30, 31, 32, 33, 34, 35, 36, 37, 38, 39, 40, 41, 42, 43, 44, 45, 46, 48, 73
Victoria Zones: 53, 57, 58, 60

TO ADVERTISE:
1.866.993.0600 | DRMG.com

